

KX-01

KX-05

KX-09

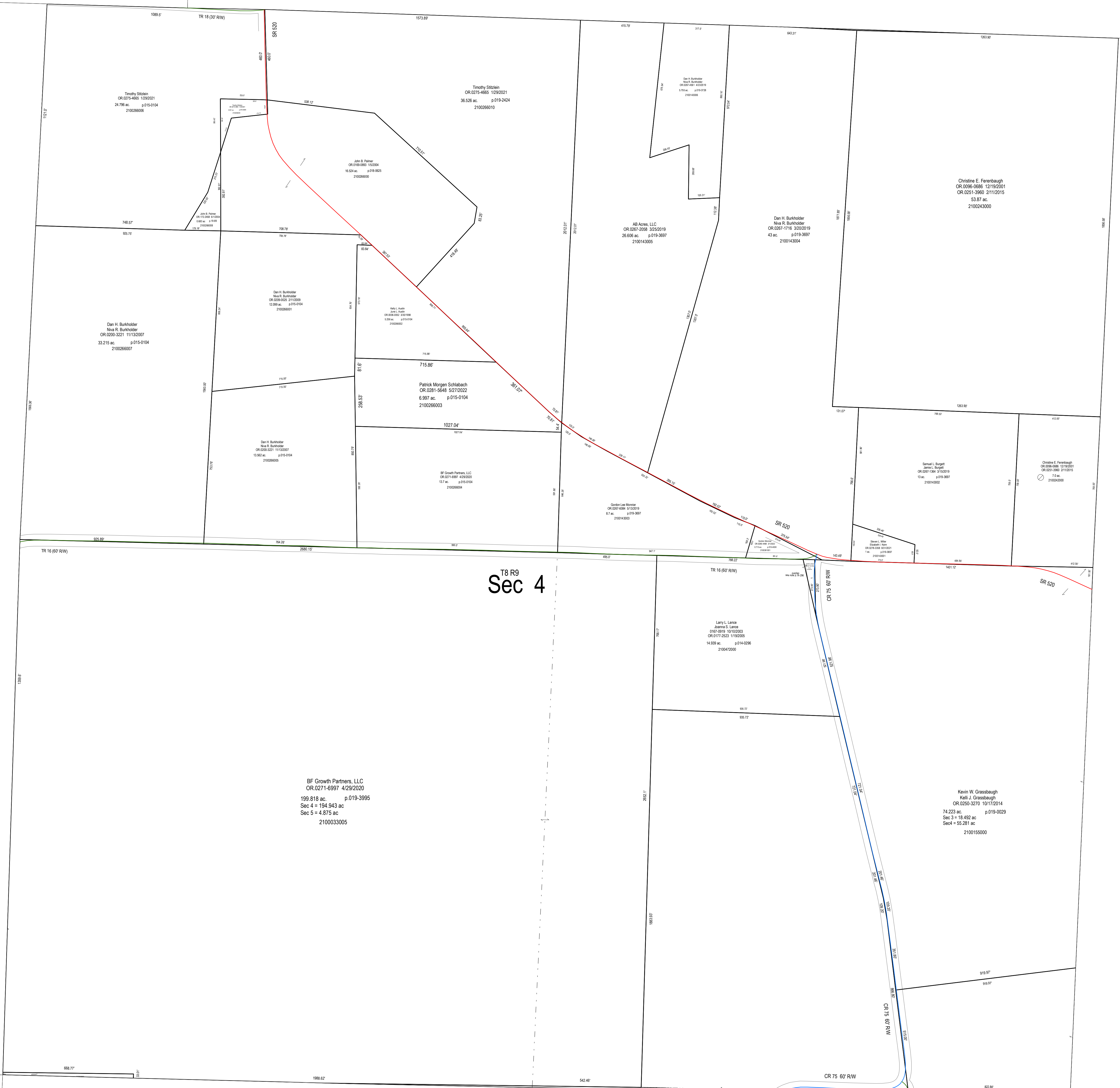
R-05

R-15

R-04

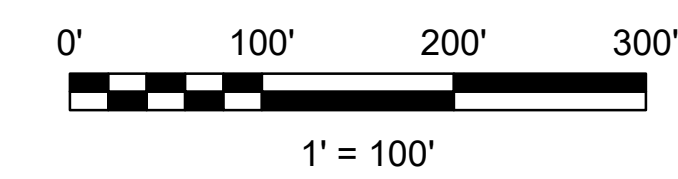
R-09

R-14



T8 R9
Sec 4

BF Growth Partners, LLC
 OR 0271-6997 4/29/2020
 199.818 ac. p.019-3995
 Sec 4 = 194.943 ac
 Sec 5 = 4.875 ac
 2100033005



LET IT BE KNOWN, THIS MAP HAS BEEN PREPARED AS A REFERENCE GUIDE TO PROPERTY OWNERSHIP. WE BELIEVE THIS INFORMATION TO BE CORRECT AND CURRENT, HOWEVER IT IS NOT INTENDED FOR ANY LEGAL USE, WHETHER IT BE SALES, TRANSFERS, TRADES, LEASES OF ANY TYPE, ETC. AND DO NOT ACCEPT RESPONSIBILITY FOR ERRORS OF ANY NATURE OR OMISSIONS CONTAINED HEREIN.

S.F.T.
 new survey required
 for next transfer

Last Revision: 5/27/2022



**Sec. 4, T-8, R-9
 Richland Twp.
 Holmes County, Ohio**

R-10